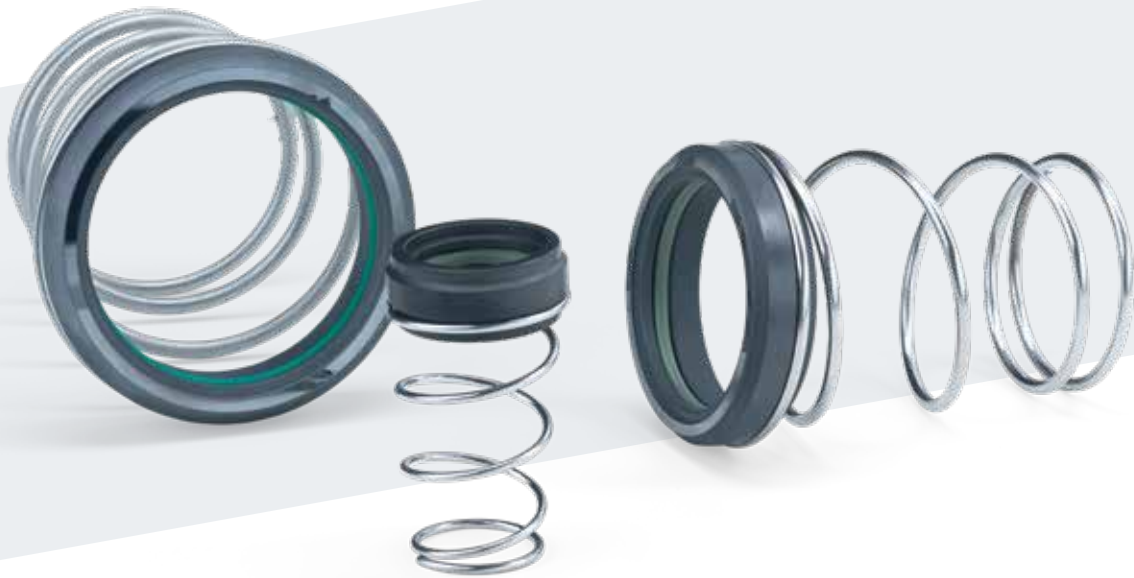


# Mechanical seal Type 161



Dynamic, non-balanced mechanical seals are manufactured for general use. This type of mechanical seal is frequently purchased in large numbers by OEMs. The choice of one or the other variant is depending on the preferences of the OEM or the application or installation conditions at the customer. It is important to know that dynamic mechanical seals with an O-ring can damage the surface of a shaft through their axial movement and should therefore be used only in conjunction with shaft sleeves. Mechanical seals can be positioned more easily through steps on the shaft sleeves, rotors or the like as locating shoulders. If this is not possible, support rings with set screws to the shaft/sleeve can also be used. The stationary parts (mating rings) should be selected such that they are elastically mounted in order to dampen shocks to and vibration of the unit as far as is technically feasible.

## Advantages

- Wide area of applications
- Low costs, large choice of materials
- Use with various stationary parts (mating rings) is possible
- Short installation spaces
- Available with „clockwise“ or „counter clockwise“ spring (depending on the direction of rotation)

# Mechanical seal Type 161

## Technical specifications

### Area of application\*

Pressure:	up to 10 bar
Temperature:	depending on elastomer
Sliding speed:	up to 15 m/s

\* The maximum specifications for temperature, pressure and sliding speed apply in each case to independent higher operating conditions. However, this does not mean that the seal will function with all extreme conditions at the same time. If in doubt contact DEPAC.

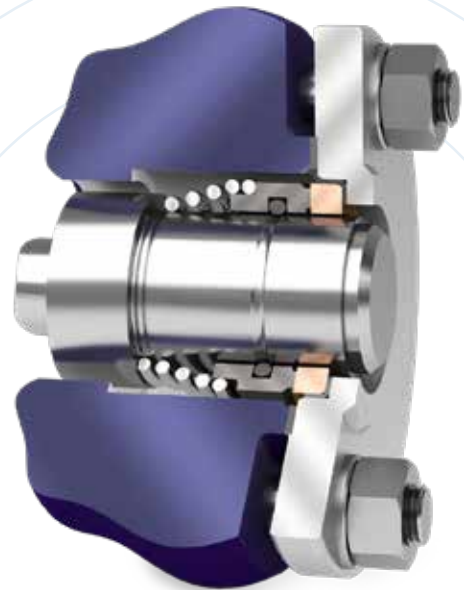
### Dimensions

Shaft diameter:	10 – 75 mm
	5/8" – 3"
	Special sizes on request

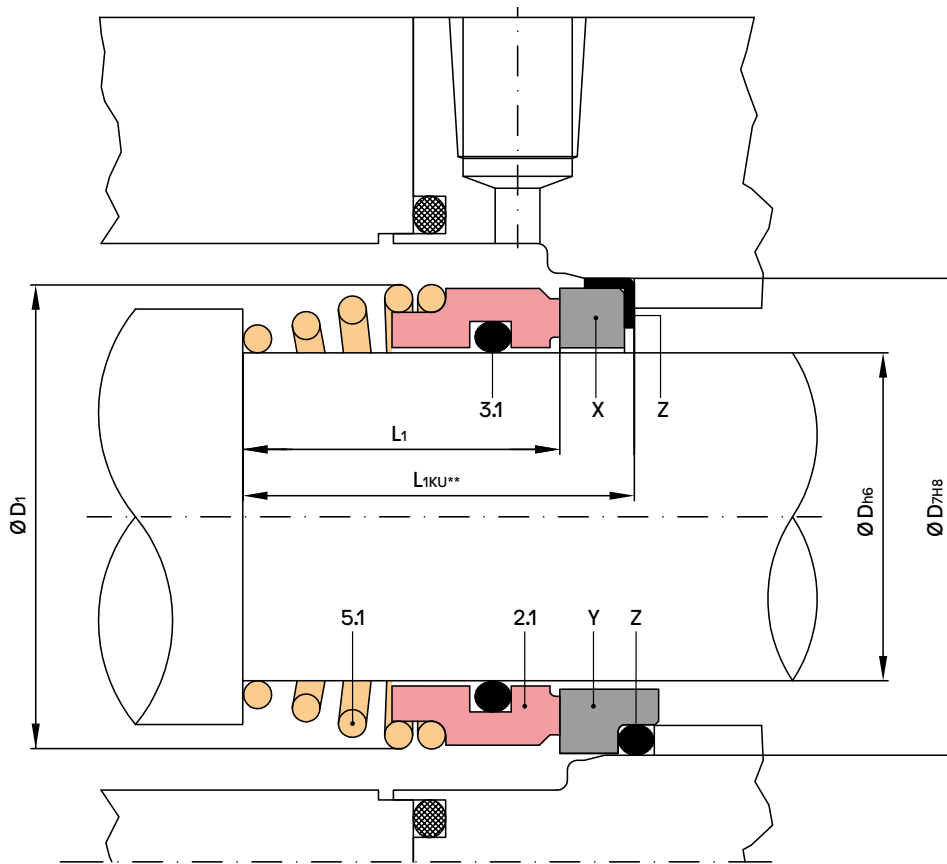
### Bill of materials

Item	Description	Material
2.1	Dynamic seal face	CA, SC
3.1	O-ring	FKM, EPDM
5.1	Spring	1.4310
X*	Stationary part DS4	SC
Y*	Stationary parts DS1, DS2	SSIC, SC, TC
Z*	O-ring or profile seal	FKM, EPDM

\* Not included in the scope of delivery!



# Mechanical seal Type 161

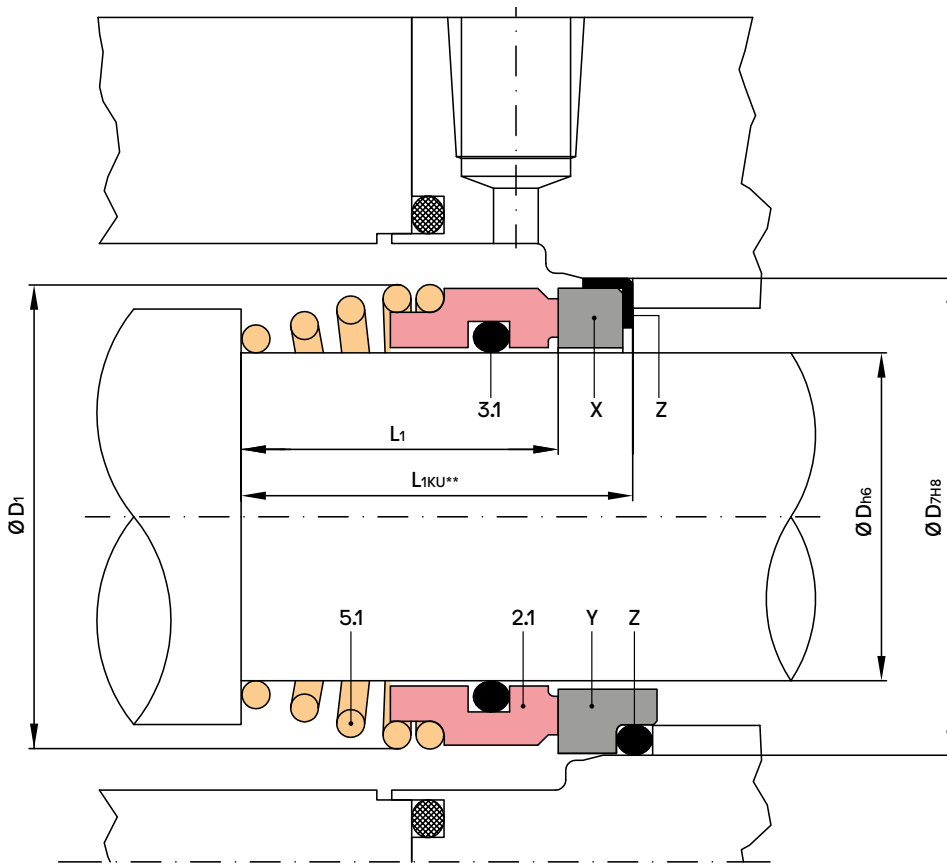


Dimension table  $\varnothing 10 - 75$  mm

O-ring DASH no.					
Dh6	D1	D7	L1KU	L1	3.1
10	19	21	32,5	25,9	111
12	21	23	32,5	25,9	112
14	23,7	25	35,0	28,4	113
15	24,7	27	35,0	28,4	114
16	25,7	27	35,0	28,4	114
18	30,5	33	37,5	30,0	210
19	31,5	35	37,5	30,0	210
20	32,5	35	37,5	30,0	211
22	34,5	37	37,5	30,0	212
24	36,5	39	40,0	32,5	214
25	37,5	40	40,0	32,5	214
28	41,5	43	42,5	35,0	216
30	43,5	45	42,5	35,0	217
32	45,5	48	42,5	35,0	219
33	46,5	48	42,5	35,0	219

O-ring DASH no.					
Dh6	D1	D7	L1KU	L1	3.1
35	48,5	50	42,5	35,0	221
38	54,5	56	45,0	36,0	222
40	56,5	58	45,0	36,0	223
43	59,5	61	45,0	36,0	224
45	61,5	63	45,0	36,0	225
48	64,5	66	45,0	36,0	226
50	66,5	70	47,5	38,0	226
53	69,5	73	47,5	36,5	227
55	72,5	75	47,5	36,5	228
60	80,5	80	52,5	41,5	229
63	83,5	83	52,5	41,5	230
65	85,5	85	52,5	41,5	231
70	90,5	92	60,0	48,7	233
75	95,5	97	60,0	48,7	234

# Mechanical seal Type 161



**Dimension table  $\varnothing \frac{5}{8}$  – 3 inches**

Dh6	D1	D7	O-ring DASH no.		
			L1KU	L1	3.1
$\frac{5}{8}$	1,012	1,063	1,378	1,118	114
$\frac{3}{4}$	1,240	1,378	1,476	1,181	210
$\frac{7}{8}$	1,437	1,535	1,575	1,280	213
$\frac{15}{16}$	1,437	1,535	1,575	1,280	214
1	1,634	1,693	1,673	1,378	215
$1\frac{1}{8}$	1,713	1,772	1,673	1,378	217
$1\frac{1}{4}$	1,791	1,890	1,673	1,378	219
$1\frac{3}{8}$	1,909	1,969	1,673	1,378	221
$1\frac{1}{2}$	2,146	2,205	1,772	1,417	222
$1\frac{5}{8}$	2,343	2,402	1,772	1,417	223
$1\frac{3}{4}$	2,421	2,480	1,772	1,417	224
$1\frac{7}{8}$	2,539	2,598	1,772	1,417	225
2	2,736	2,874	1,870	1,437	226
$2\frac{1}{8}$	2,854	2,953	1,870	1,437	228
$2\frac{1}{4}$	3,091	3,071	2,067	1,634	229

Dh6	D1	D7	O-ring DASH no.		
			L1KU	L1	3.1
$2\frac{3}{8}$	3,287	3,268	2,067	1,634	230
$2\frac{1}{2}$	3,327	3,346	2,067	1,634	231
$2\frac{5}{8}$	3,563	3,622	2,362	1,917	232
$2\frac{3}{4}$	3,563	3,622	2,362	1,917	233
$2\frac{7}{8}$	3,760	3,819	2,362	1,917	234
3	3,957	4,134	2,362	1,890	235



Mechanical seals  
Packings  
Hydraulic seals  
Workshop  
Comtec

DEPAC Anstalt  
Wirtschaftspark 44, FL-9492 Eschen  
T +423 373 9700, F +423 373 9719  
office@depac-fl.com, www.depac.at

Your authorized DEPAC dealer:

B200836