



Types: 200, 201



Metal bellow seals

www.depac.at



Table of contents

Type 200	S. 3-6
Type 201	S. 7-9

The type 200 is a dynamic, pressure balanced mechanical seal. The type 200 can be used with media containing solids. That means: Due to the centrifugal forces, the solids do not settle in the metal bellows..

Advantages

- Pressure balanced for a longer service life
- Welded bellows are self-cleaning
- Independent of the direction of rotation
- Use with various stationary faces possible

Mechanical seal Type 200

Mechanical seal Type 200

Technical specifications

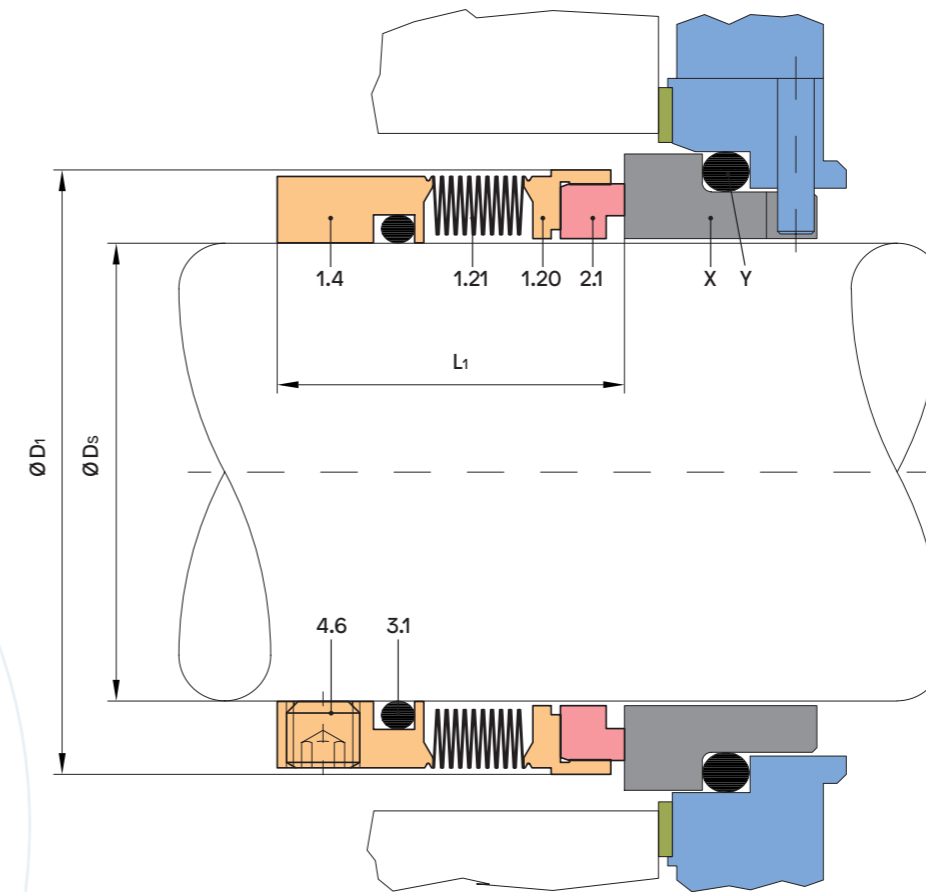
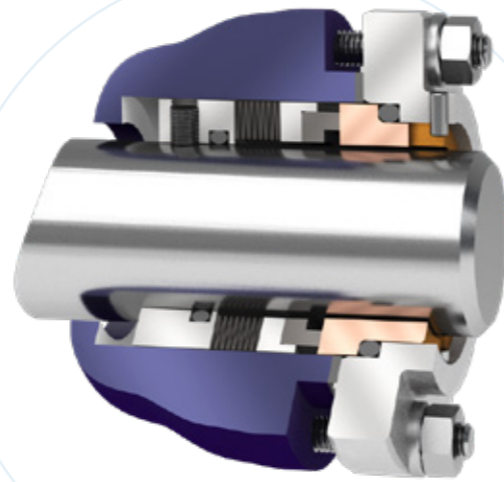
Area of application*

Pressure: 700 mmHg – 28 bar
 Temperature: depending on elastomer
 Sliding speed: up to 25 m/s

* The maximum specifications for temperature, pressure and sliding speed apply in each case to independent higher operating conditions. However, this does not mean that the seal will function with all extreme conditions at the same time. If in doubt contact DEPAC.

Dimensions

Shaft diameter: 25 - 100 mm
 1" - 4"
 Special sizes on request



Bill of materials

Item	Description	Material
1.4	Adjusting ring	1.4571
1.20	Seal face holder	1.4571
1.21	Bellow	2.4819
2.1	Dynamic seal face	CA/SC/SSIC/TC
4.6	Set screw	A4
X*	Stationary part DS1, DS2	SC / SSIC / TC
Y*	O-ring	FKM, EPDM

Other sizes, materials or construction variants on request.

*Not included, other materials on request.

Dimension table Ø 25 – 100 mm

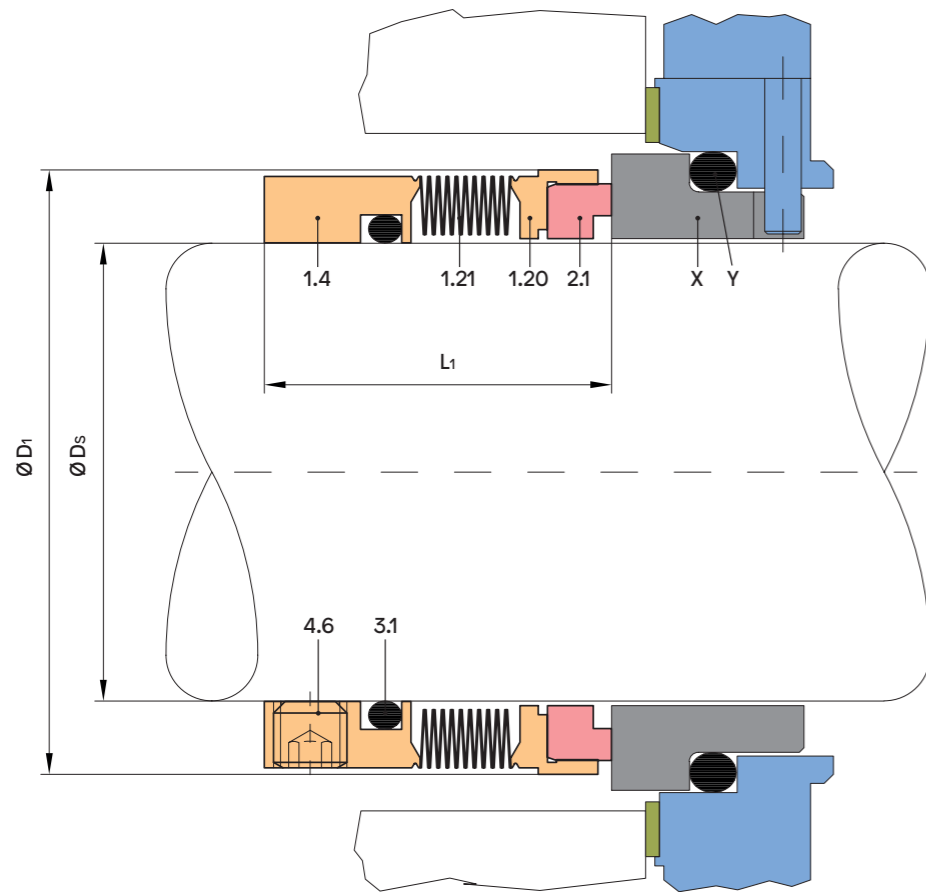
DS	L1	D1	DASH Nr. O-Ringe	
			3.1	
25	29	40,0	120	
28	31	43,0	122	
30	31	45,0	123	
32	31	47,0	124	
33	31	47,0	125	
35	31	49,2	126	
38	32	53,0	128	
40	32	56,0	130	
42	32	58,0	131	
43	32	58,0	132	
45	32	58,0	133	
48	32	62,0	135	
50	34	66,0	136	
53	34	68,0	138	

DS	L1	D1	DASH Nr. O-Ringe	
			3.1	
55	34	72,0	139	
58	38	75,0	229	
60	38	75,0	229	
63	38	81,0	230	
65	38	84,1	231	
68	42	85,0	232	
70	42	85,0	232	
75	42	92,1	234	
80	42	99,0	236	
85	42	105,0	237	
90	47	108,0	239	
95	48	114,3	240	
100	48	118,0	242	

Mechanical seal Type 200



Mechanical seal Type 201



The type 201 is a stationary, pressure balanced mechanical seal. The mechanical seal is designed for demanding ranges of applications, including hot water and chemical applications. The type 201 seals reliably at temperatures of up to 240 degrees Celsius and a pressure of 20 bar. DEPAC recommends spot-drilling the shafts or sleeves for set screw fastening at pressure loads exceeding 10 bar.

Dimension table Ø 1 – 4 inches

DS	L1	O-ring DASH no.	
		D1	3.1
1	1,142	1,575	121
1 1/8	1,220	1,693	122
1 1/4	1,220	1,850	124
1 3/8	1,220	1,937	126
1 1/2	1,260	2,087	128
1 5/8	1,260	2,205	130
1 3/4	1,260	2,283	132
1 7/8	1,260	2,441	134
2	1,339	2,598	136
2 1/8	1,339	2,677	138
2 1/4	1,339	2,835	140
2 3/8	1,496	2,953	229
2 1/2	1,496	3,189	230

DS	L1	O-ring DASH no.	
		D1	3.1
2 5/8	1,496	3,311	231
2 3/4	1,654	3,346	232
2 7/8	1,654	3,626	233
3	1,654	3,898	234
3 1/8	1,654	3,898	235
3 1/4	1,654	4,134	236
3 3/8	1,654	4,134	237
3 1/2	1,850	4,252	238
3 5/8	1,890	4,500	239
3 3/4	1,890	4,500	240
3 7/8	1,890	4,646	241
4	1,890	4,882	242

Advantages

- Stationary mechanical seal design principle
- No scoring of pump shafts/sleeves
- Pressure balanced
- No stepped sleeve required for pressure balancing
- Shock and vibration-dampend rotating face
- Independent of the direction of rotation

Mechanical seal Type 201

Mechanical seal Type 201

Technical specifications

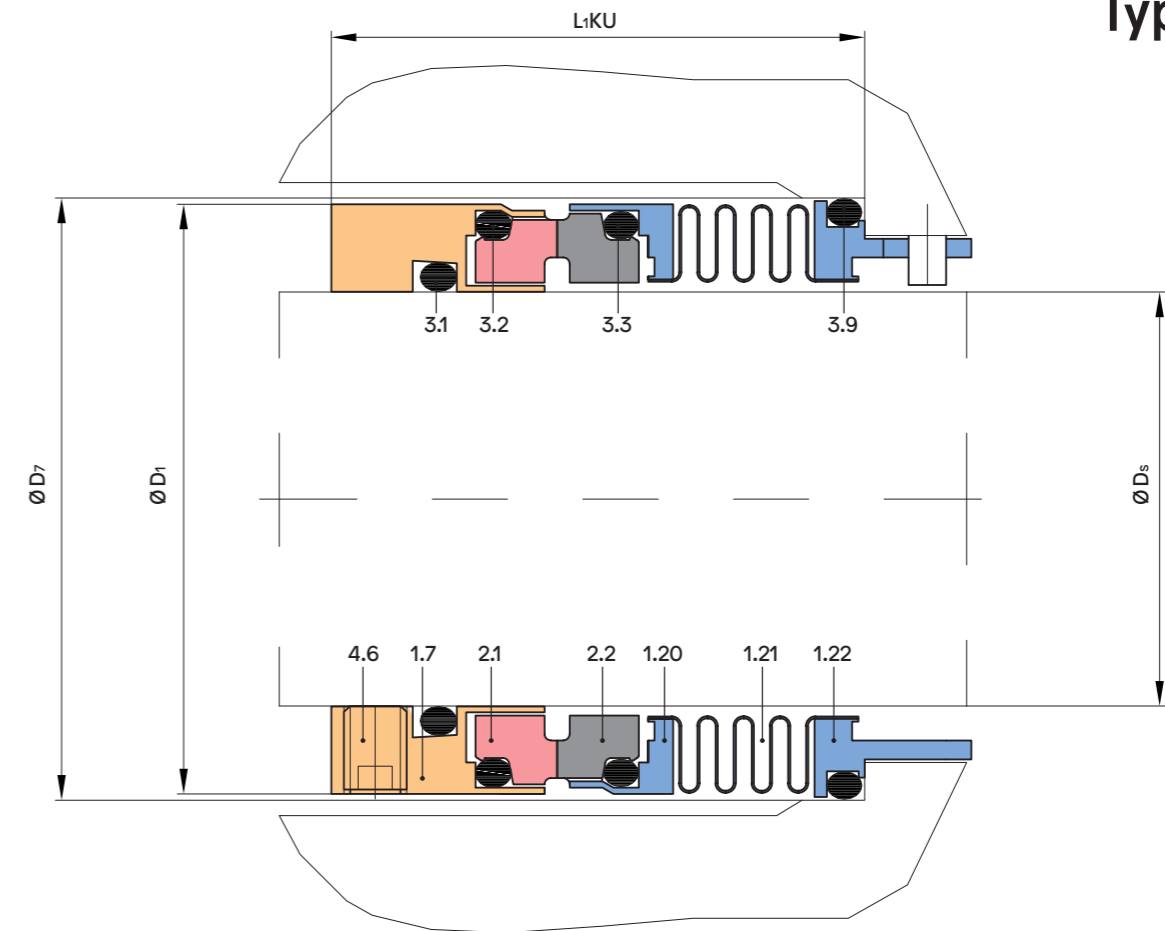
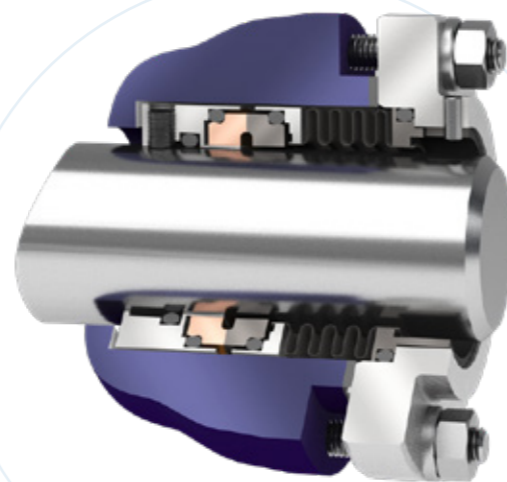
Area of application*

Pressure: 20 bar
 Temperature: depending on elastomer
 Sliding speed: 30 m/s

* The maximum specifications for temperature, pressure and sliding speed apply in each case to independent higher operating conditions. However, this does not mean that the seal will function with all extreme conditions at the same time. If in doubt contact DEPAC.

Dimensions

Shaft diameter: 28 - 70 mm



Bill of materials

Item	Description	Material
1.7	Dynamic retainer	1.4571
1.20	Seal face holder	1.4571
1.21	Bellow	2.4819
1.22	Stationary retainer	1.4571
2.1	Dynamic seal face	SC/SSIC/TC
2.2	Stationary seal face	CA/SC/SSIC/TC
3.1, 3.2, 3.3, 3.9	O-ring	FKM, EPDM, Kalrez®, PTFE, ...
4.6	Set screw	A4

Other sizes, materials or construction variants on request.

Dimension table Ø 28 – 70 mm

Ds	D1	D7	L1Ku	O-ring DASH no.			
				3.1	3.2	3.3	3.9
28	42	43	42,5	122	127	127	128
30	44	45	42,5	123	128	128	129
32	47	48	42,5	124	130	130	131
33	47	48	42,5	125	130	130	131
35	49	50	42,5	126	131	131	132
38	53	56	45	128	134	134	136
40	55	58	45	130	135	135	137
43	58	61	45	131	137	137	139
45	60	63	45	133	138	138	141
48	65	66	45	135	141	141	143
50	65	70	47,5	136	141	141	145
53	68	73	47,5	138	143	143	147
55	70	75	47,5	139	145	145	148
58	74	78	47,5	141	147	147	150
60	74	80	52,5	142	147	147	151
63	79	83	52,5	144	150	150	151
65	80	85	52,5	145	151	151	151
70	84	92	60	148	151	151	153



Mechanical seals
Packings
Hydraulic seals
Workshop
Comtec

DEPAC Anstalt
Wirtschaftspark 44, FL-9492 Eschen
T +423 373 9700, F +423 373 9719
office@depac-fl.com, www.depac.at

Your authorized DEPAC dealer:

E200836