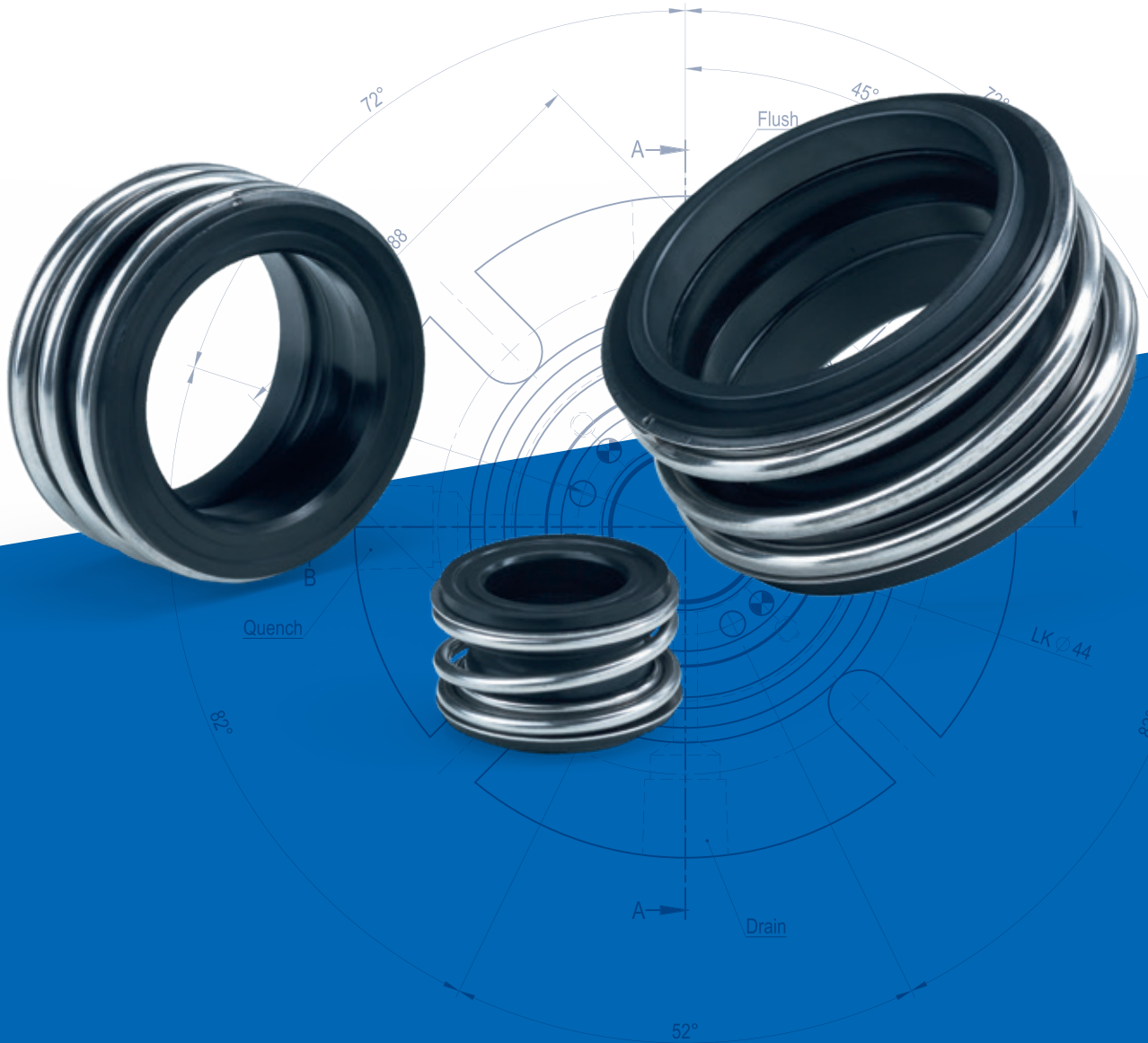




Types: 170, 170A,  
175A, 175B, 175C



# Elastomer bellows seals

[www.depac.at](http://www.depac.at)



## Table of contents

Type 170 .....	S. 3-7
Type 170A .....	S. 8-11
Type 175A .....	S. 12-14
Type 175B .....	S. 15-17
Type 175C .....	S. 18-20

DEPAC offers a complete range of mechanical seals with elastomer bellows designs at a very competitive price especially for OEMs. The various versions are designed for applications in the most diverse installation spaces. All DEPAC mechanical seal variants can be supplied with various DEPAC stationary parts; the stationary part DS4 is used as standard with the type 170. Other stationary parts change the installation length. Use this inexpensive alternative mechanical seal, especially if you need large quantities.

### Advantages

- Rotating unit already preassembled
- Independent of the direction of rotation
- No seizing of O-rings
- Wide area of applications
- Low costs
- Use with various stationary parts possible
- For short and DIN installation spaces
- No scoring of shafts and shaft sleeves
- Optimal damping of shock and vibration movements

# Elastomer bellows seals Type 170

# Elastomer bellows seals Type 170

## Technical specifications

### Area of application\*

Pressure: up to 10 bar  
 Temperature: depending on elastomer  
 Sliding speed: up to 15 m/s

\* The maximum specifications for temperature, pressure and sliding speed apply in each case to independent higher operating conditions. However, this does not mean that the seal will function with all extreme conditions at the same time. If in doubt contact DEPAC.

### Dimensions

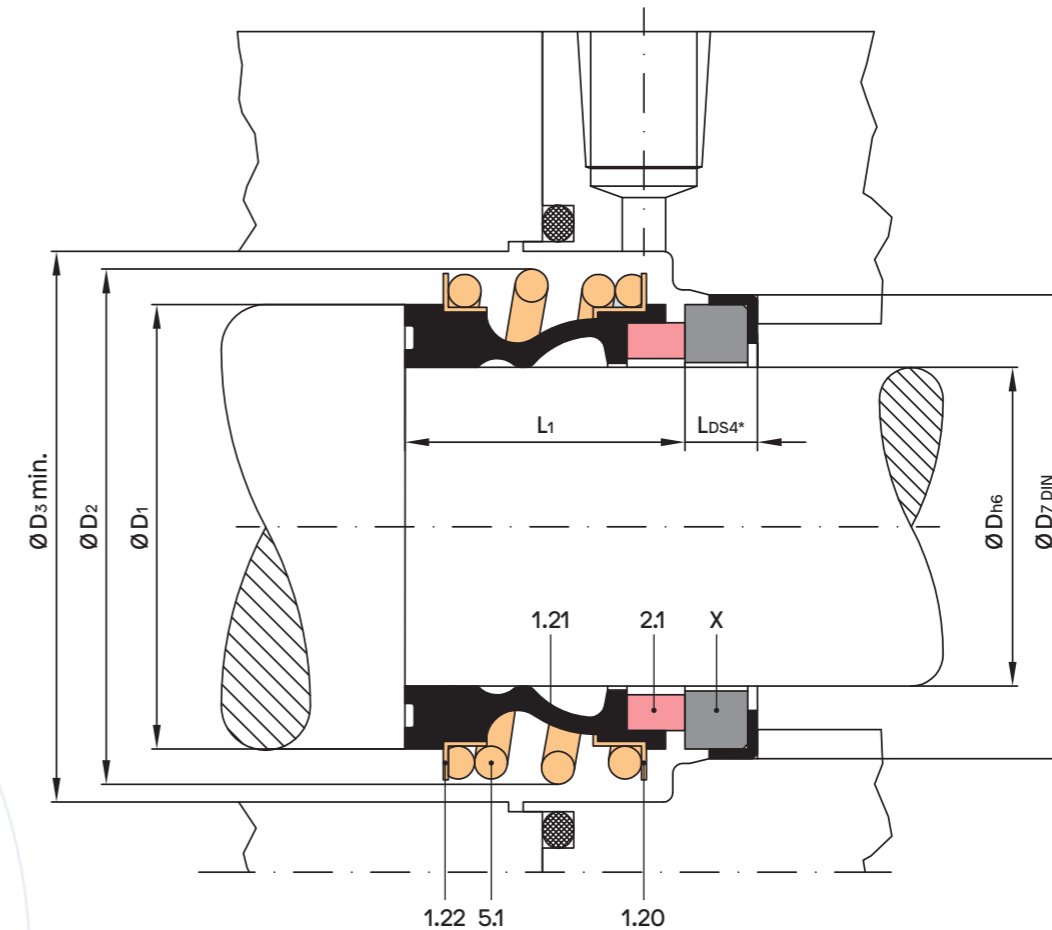
Shaft diameter: 10 – 100 mm  
 3/8" – 3"  
 Special sizes on request



### Bill of materials

Item	Description	Material
1.21	Bellows	FKM, NBR, EPDM
1.20, 1.22	Angle ring	1.4301
2.1	Dynamic seal face	CA, SC, SSIC
5.1	Spring	1.4310
X*	Stationary part DS4	CE, SC
Y*	Profile seal	FKM, EPDM, PTFE

\* Not included in the scope of delivery!



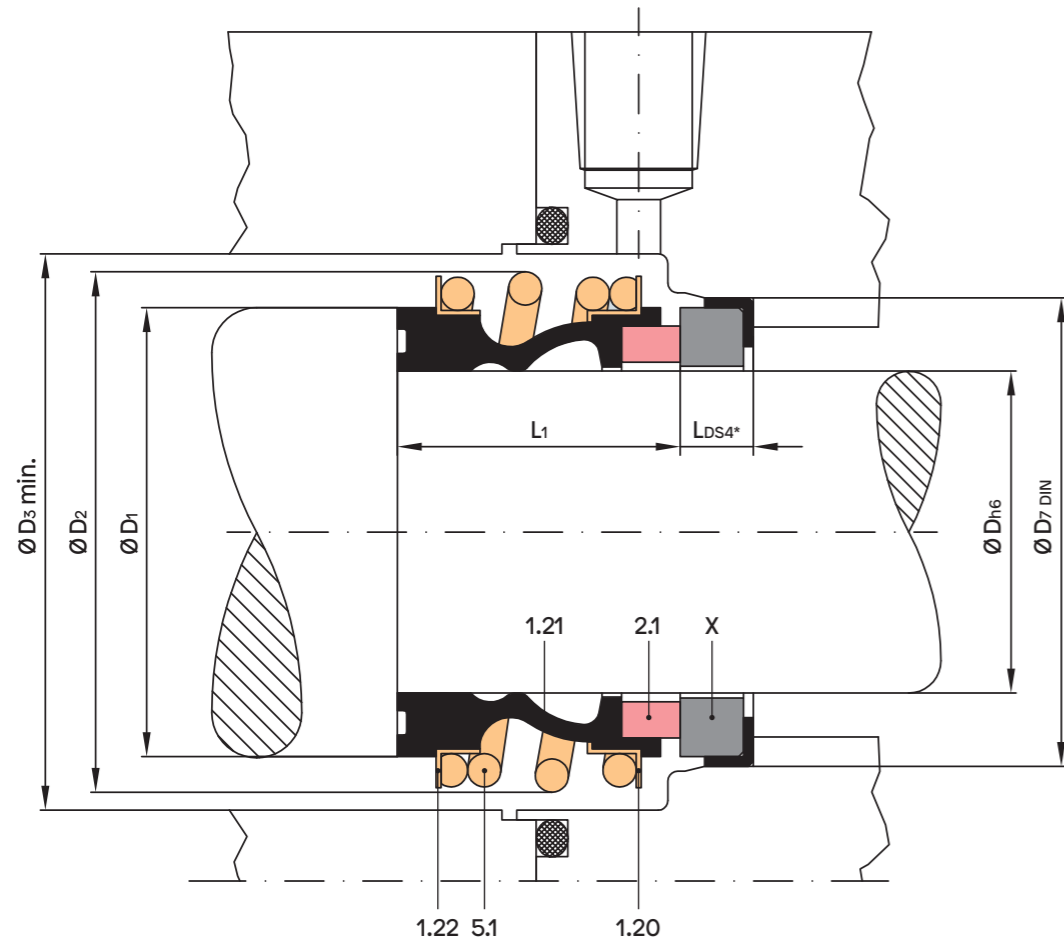
Dimension table Ø 10 – 68 mm

Dh6	D1	D2	D3 min.	D7 DIN	L1	LDS4*
10	20,5	20,0	22,0	21	14,5	6,6
12	22,5	24,0	26,0	23	15	6,6
14	26,5	28,0	30,0	25	17	6,6
15	26,5	28,0	30,0	27	17	6,6
16	26,5	28,0	30,0	27	17	6,6
18	29,0	31,0	33,0	33	19,5	7,5
20	33,0	36,0	38,0	35	21,5	7,5
22	33,0	36,0	38,0	37	21,5	7,5
24	38,0	40,5	42,5	39	22,5	7,5
25	38,0	41,0	43,0	40	23	7,5
28	44,0	47,0	49,0	43	26,5	7,5
30	44,0	47,0	49,0	45	26,5	7,5
32	46,0	51,0	53,0	48	27,5	7,5
33	46,0	51,0	53,0	48	27,5	7,5

Dh6	D1	D2	D3 min.	D7 DIN	L1	LDS4*
35	50,0	55,0	57,0	50	28,5	7,5
38	53,0	58,0	60,0	56	30	9
40	55,0	60,0	62,0	58	30	9
43	58,0	63,0	65,0	61	30	9
45	60,0	65,0	67,0	63	30	9
48	63,0	69,0	71,0	66	30,5	9
50	65,0	71,0	74,0	70	30,5	9,5
53	70,0	76,0	79,0	73	33	11
55	72,0	78,0	81,0	75	35	11
58	75,0	82,0	85,0	78	37	11
60	79,0	85,0	88,0	80	38	11
65	84,0	90,0	93,0	85	40	11
68	88,0	94,0	97,0	90	40	11,3

\* Illustration and installation lengths with stationary part DS4

## Elastomer bellows seals Type 170

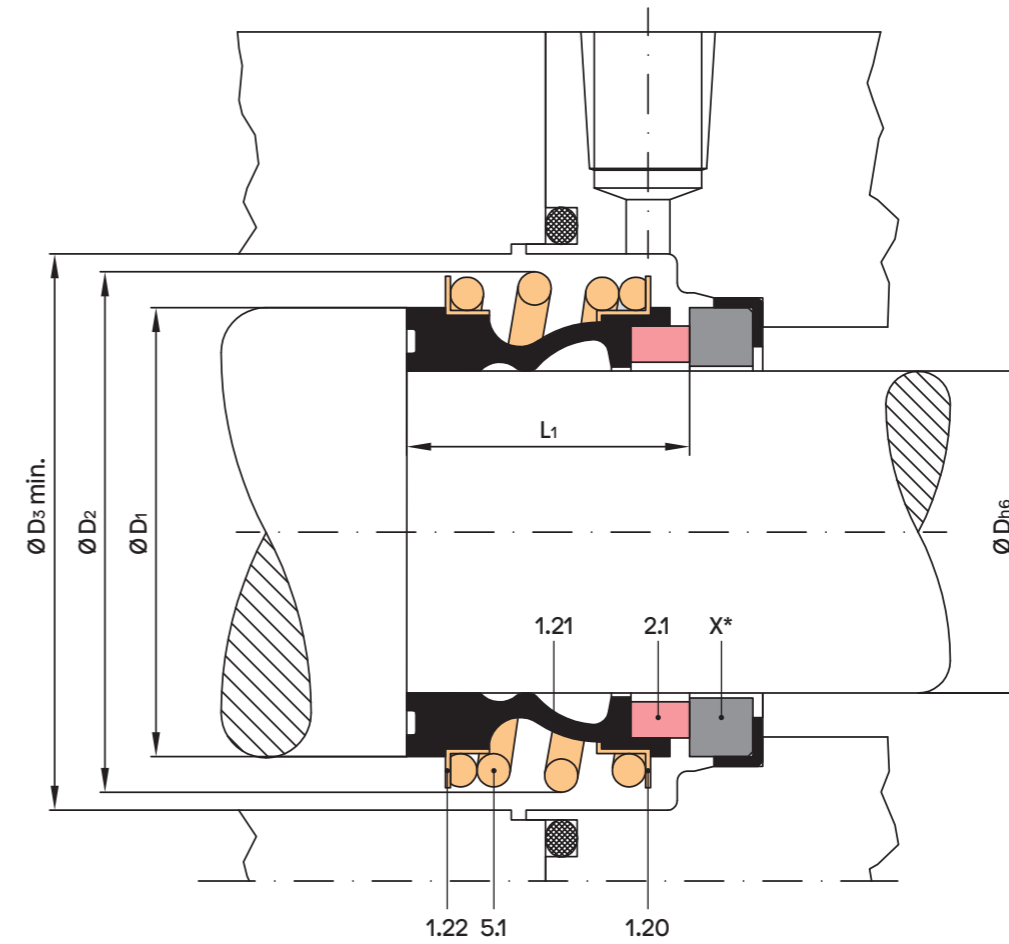


Dimension table  $\varnothing$  70 – 100 mm

Dh6	D1	D2	D3 min.	D7 DIN	L1	LDS4*
70	90,0	97,0	101,0	92	40	11,3
75	95,0	102,0	106,0	97	40	11,3
80	100,0	108,0	112,0	105	40	12
85	107,0	117,0	121,0	110	41	14
90	114,0	126,0	130,0	115	45	14
95	119,0	131,0	135,0	120	46	14
100	124,0	131,0	135,0	125	47	14

\* Illustration and installation lengths with stationary part DS4

## Elastomer bellows seals Type 170



Dimension table  $\varnothing$   $\frac{3}{8}$  – 3 inches

Dh6	D1	D2	D3 min.	L1
$\frac{3}{8}$	0,807	0,886	0,945	0,571
$\frac{1}{2}$	0,886	0,984	1,043	0,591
$\frac{5}{8}$	1,043	1,122	1,181	0,669
$\frac{3}{4}$	1,299	1,457	1,516	0,846
$\frac{7}{8}$	1,299	1,457	1,516	0,846
1	1,496	1,673	1,732	0,906
$1\frac{1}{8}$	1,732	1,929	2,008	1,043
$1\frac{1}{4}$	1,811	2,106	2,185	1,083
$1\frac{3}{8}$	1,969	2,244	2,323	1,122
$1\frac{1}{2}$	2,087	2,323	2,402	1,181
$1\frac{5}{8}$	2,283	2,579	2,657	1,181
$1\frac{3}{4}$	2,362	2,677	2,756	1,181
$1\frac{7}{8}$	2,480	2,776	2,854	1,201
2	2,559	2,913	3,031	1,201

Dh6	D1	D2	D3 min.	L1
$2\frac{1}{8}$	2,835	3,198	3,307	1,578
$2\frac{1}{4}$	2,953	3,366	3,484	1,457
$2\frac{3}{8}$	3,110	3,484	3,602	1,496
$2\frac{1}{2}$	3,307	3,681	3,799	1,575
$2\frac{5}{8}$	3,465	3,799	3,917	1,575
$2\frac{3}{4}$	3,543	3,917	4,075	1,575
$2\frac{7}{8}$	3,740	4,213	4,370	1,575
3	3,740	4,213	4,370	1,575

## Elastomer bellows seals Type 170A



DEPAC offers a complete range of mechanical seals with elastomer bellows designs at a very competitive price especially for OEMs. The various versions are designed for applications in the most diverse installation spaces. All DEPAC mechanical seal variants can be supplied with various DEPAC stationary parts. The stationary part DS4 is used as standard with the type 170A; the L1KU installation length is thus guaranteed. Other stationary parts change the installation length. Use this inexpensive alternative mechanical seal, especially if you need large quantities.

### Advantages

- L1KU installation length with stationary part DS4
- Rotating unit already preassembled
- Independent of the direction of rotation
- No seizing of O-rings
- Low costs, wide area of application
- Use with various stationary parts possible
- For short and DIN installation spaces
- No scoring of shafts and shaft sleeves
- Optimal damping of shock and vibration movements

## Elastomer bellows seals Type 170A

### Technical specifications

#### Area of application\*

Pressure:	up to 10 bar
Temperature:	depending on elastomer
Sliding speed:	up to 15 m/s

\* The maximum specifications for temperature, pressure and sliding speed apply in each case to independent higher operating conditions. However, this does not mean that the seal will function with all extreme conditions at the same time. If in doubt contact DEPAC.

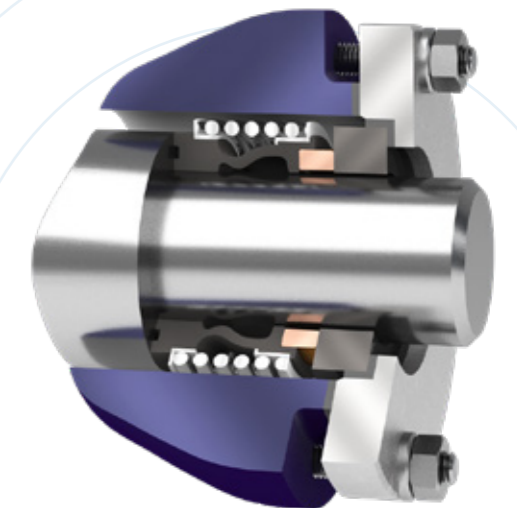
#### Dimensions

Shaft diameter:	10 – 100 mm
	Imperial and special sizes on request

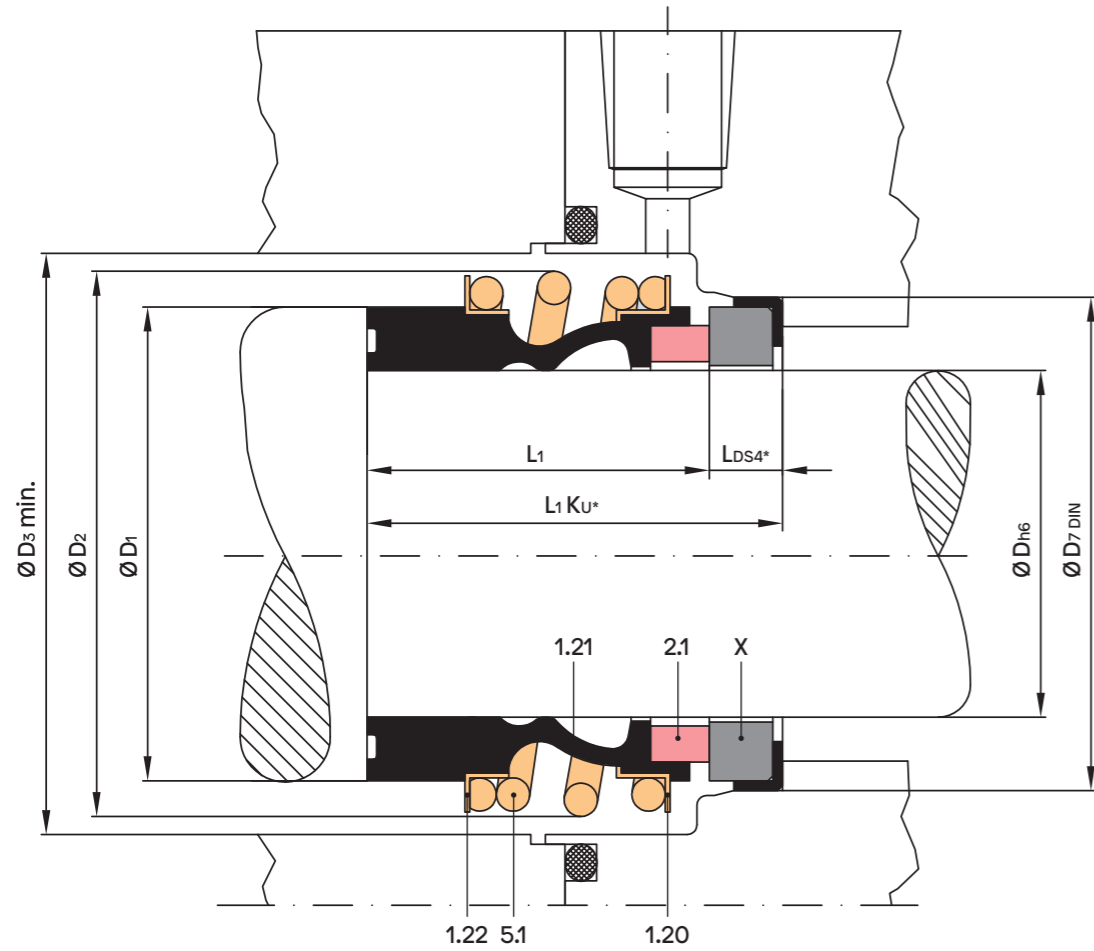
#### Bill of materials

Item	Description	Material
1.21	Bellows	FKM, NBR, EPDM
1.20, 1.22	Angle ring	1.4301
2.1	Dynamic seal face	CA, SC, SSIC
5.1	Spring	1.4310
X*	Stationary part DS4	CE, SC
Y*	Profile seal	FKM, EPDM, PTFE

\* Not included in the scope of delivery!



## Elastomer bellows seals Type 170A



Dimension table Ø 10 – 60 mm

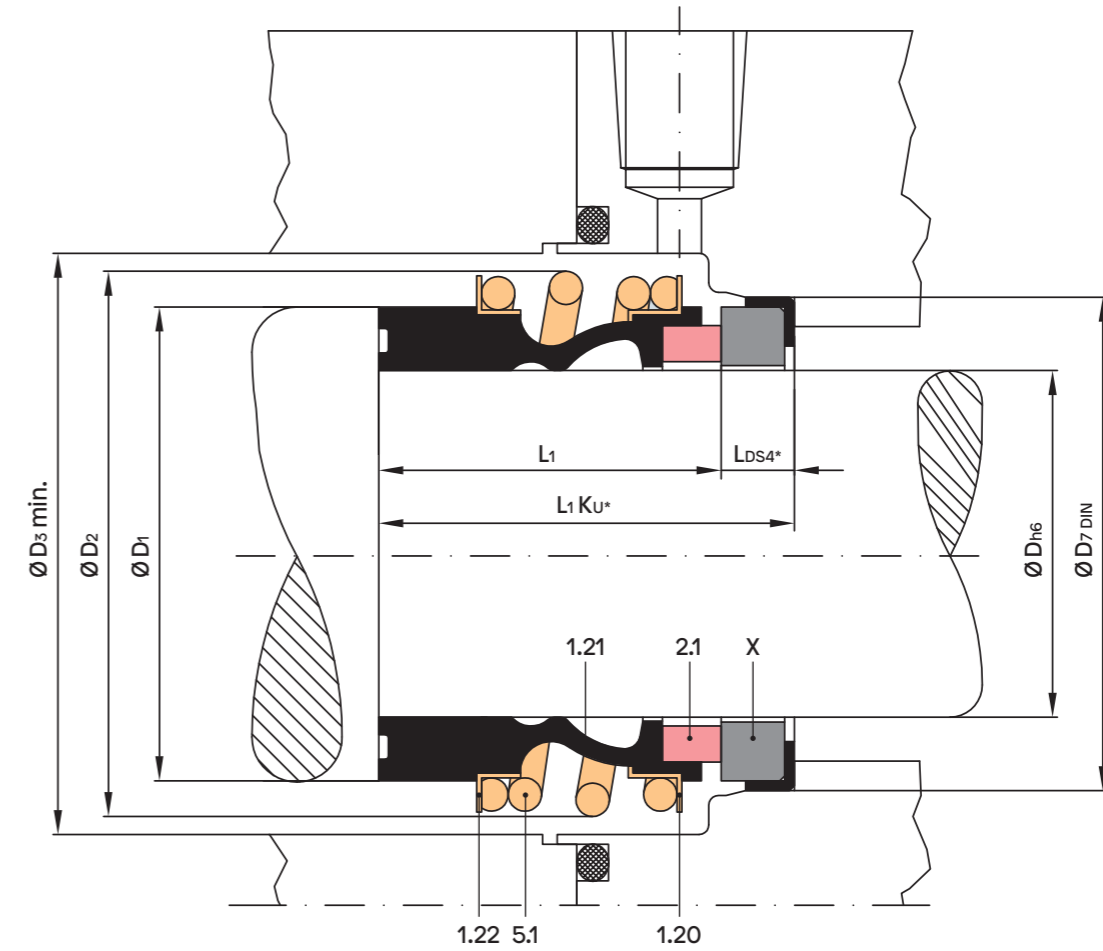
Dh6	D1	D2	D3 min.	D7 DIN	L1	LDS4*	L1KU
10	20,5	22,5	24,0	21	25,9	6,6	32,5
12	22,5	25,0	26,5	23	25,9	6,6	32,5
14	26,5	28,5	30,0	25	28,4	6,6	35,0
15	26,5	28,5	30,0	27	28,4	6,6	35,0
16	26,5	28,5	30,0	27	28,4	6,6	35,0
18	29,0	32,0	33,5	33	30,0	7,5	37,5
19	33,0	37,0	38,5	35	30,0	7,5	37,5
20	33,0	37,0	38,5	35	30,0	7,5	37,5
22	33,0	37,0	38,5	37	30,0	7,5	37,5
24	38,0	42,5	44,0	39	32,5	7,5	40,0
25	38,0	42,5	44,0	40	32,5	7,5	40,0
28	44,0	49,0	51,0	43	35,0	7,5	42,5
30	44,0	49,0	51,0	45	35,0	7,5	42,5
32	46,0	53,5	55,5	48	35,0	7,5	42,5

\* Illustration and installation lengths with stationary part DS4

Dh6	D1	D2	D3 min.	D7 DIN	L1	LDS4*	L1KU
33	46,0	53,5	55,5	48	35,0	7,5	42,5
35	50,0	57,0	59,0	50	35,0	7,5	42,5
38	53,0	59,0	61,0	56	36,0	9,0	45,0
40	55,0	62,0	64,0	58	36,0	9,0	45,0
42	58,0	65,5	67,5	61	36,0	9,0	45,0
43	58,0	65,5	67,5	61	36,0	9,0	45,0
45	60,0	68,0	70,0	63	36,0	9,0	45,0
48	63,0	70,5	72,5	66	36,0	9,0	45,0
50	65,0	74,0	77,0	70	38,0	9,5	47,5
53	70,0	78,5	81,5	73	36,5	11,0	47,5
55	72,0	81,0	84,0	75	36,5	11,0	47,5
58	75,0	85,5	88,5	78	41,5	11,0	52,5
60	79,0	88,5	91,5	80	41,5	11,0	52,5

\* Illustration and installation lengths with stationary part DS4

## Elastomer bellows seals Type 170A



Dimension table Ø 65 – 100 mm

Dh6	D1	D2	D3 min.	D7 DIN	L1	LDS4*	L1KU
65	84,0	93,5	96,5	85	41,5	11,0	52,5
68	88,0	96,5	99,5	90	41,2	11,3	52,5
70	90,0	99,5	103,5	92	48,7	11,3	60,0
75	95,0	107,0	111,0	97	48,7	11,3	60,0
80	100,0	112,0	116,0	105	48,0	12,0	60,0
85	107,0	116,7	120,7	110,0	46,0	14,0	60,0
90	114,0	122,5	126,5	115,0	51,0	14,0	65,0
95	119,0	131,5	135,5	120,0	51,0	14,0	65,0
100	124,0	131,5	135,5	125,0	51,0	14,0	65,0

\* Illustration and installation lengths with stationary part DS4

## Elastomer bellows seals Type 175A



DEPAC offers a complete range of mechanical seals with a short bellows design at a very competitive price especially for OEMs. The various versions are designed for applications in the most diverse installation spaces. All DEPAC mechanical seal variants can be supplied with various DEPAC stationary parts. The stationary parts that should be favoured in terms of design are illustrated in the sectional drawings and taken into account in the installation lengths. Other stationary parts change the installation length. Use this inexpensive alternative mechanical seal, especially if you need large quantities.

### Advantages

- L1KU installation length with stationary part DS1 and DS2
- Rotating unit already preassembled
- Independent of the direction of rotation
- No seizing of O-rings
- Wide area of applications
- Low costs
- Use with various stationary parts possible
- No scoring of shafts and shaft sleeves
- Optimal damping of shock and vibration movements

## Elastomer bellows seals Type 175A

### Technical specifications

#### Area of application\*

Pressure:	up to 10 bar
Temperature:	depending on elastomer
Sliding speed:	up to 15 m/s

\* The maximum specifications for temperature, pressure and sliding speed apply in each case to independent higher operating conditions. However, this does not mean that the seal will function with all extreme conditions at the same time. If in doubt contact DEPAC.

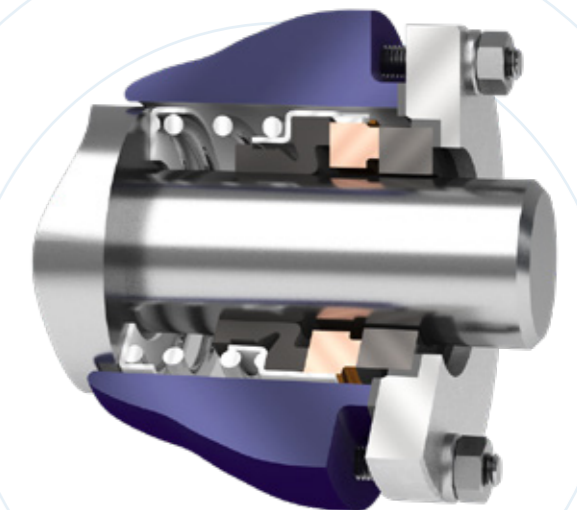
#### Dimensions

Shaft diameter:	12 – 100 mm
	Imperial and special sizes on request

#### Bill of materials

Item	Description	Material
1.21	Bellows	FKM, NBR, EPDM
1.20, 1.22	Angle ring	1.4301
2.1	Dynamic seal face	CA, SC, SSIC
5.1	Spring	1.4310
X*	Stationary part DS1, DS2	SC, SSIC, TC
Y*	Stationary part DS4	CE, SC
Z*	O-ring or profile seal	FKM, EPDM, PTFE

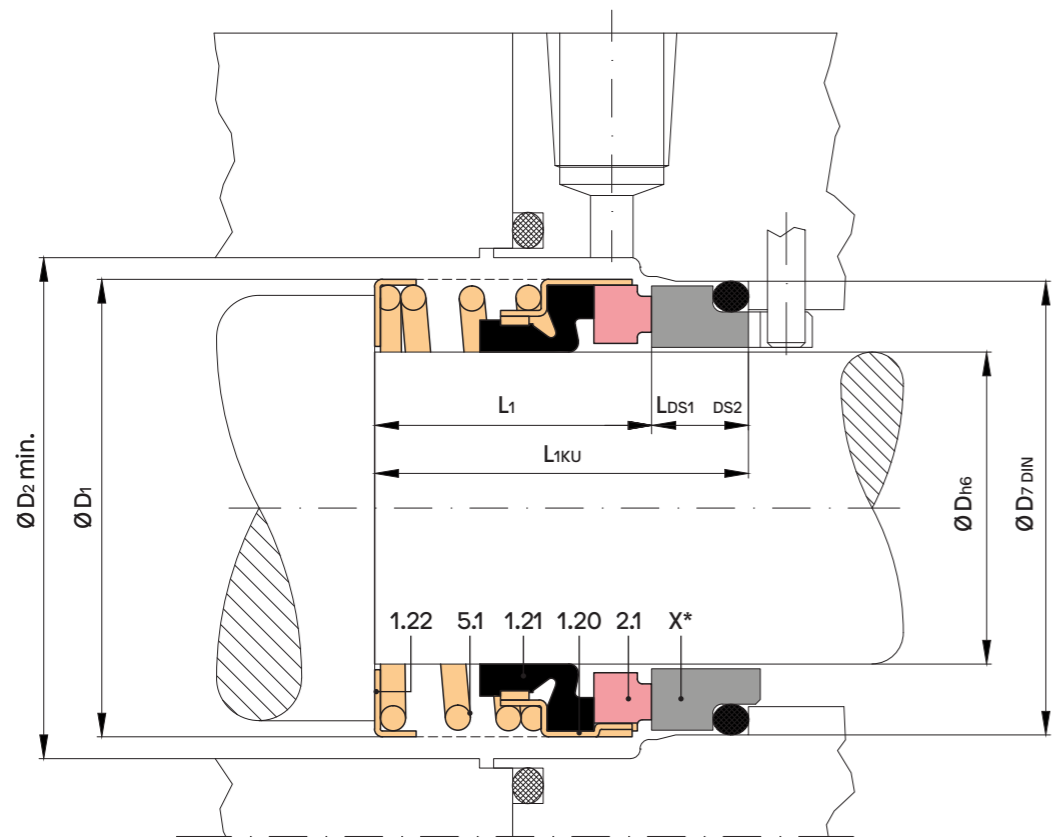
\* Nicht im Lieferumfang enthalten! Andere Materialien auf Anfrage.



## Elastomer bellows seals Type 175A



## Elastomer bellows seals Type 175B



DEPAC offers a complete range of mechanical seals with a short bellows design at a very competitive price especially for OEMs. The various versions are designed for applications in the most diverse installation spaces. All DEPAC mechanical seal variants can be supplied with various DEPAC stationary parts. The stationary parts that should be favoured in terms of design are illustrated in the sectional drawings and taken into account in the installation lengths. Other stationary parts change the installation length. Use this inexpensive alternative mechanical seal, especially if you need large quantities.

Dimension table Ø 12 – 100 mm

Dh6	D1	D2 min.	D7 DIN	L1	L1KU	LDS1 DS2
12	21,7	23,7	23	24,7	32,5	7,8
14	24,4	26,4	25	27,2	35	7,8
16	27	29	27	27,2	35	7,8
18	30,6	32,6	33	27,3	37,5	10,2
20	33,4	35,4	35	27,3	37,5	10,2
22	33,4	35,4	37	27,3	37,5	10,2
24	37,8	39,8	39	29,8	40	10,2
25	39,2	41,2	40	29,8	40	10,2
28	42,1	44,1	43	32,3	42,5	10,2
30	44	46	45	32,3	42,5	10,2
32	45,6	47,6	48	32,3	42,5	10,2
33	45,6	47,6	48	32,3	42,5	10,2
35	49,3	51,3	50	32,3	42,5	10,2
38	52,7	54,7	56	33,3	45	11,7
40	55,7	57,7	58	33,3	45	11,7
43	58,6	60,6	61	33,3	45	11,7
45	61	63	63	33,3	45	11,7

Dh6	D1	D2 min.	D7 DIN	L1	L1KU	LDS1 DS2
40	55,7	57,7	58	33,3	45	11,7
43	58,6	60,6	61	33,3	45	11,7
45	61	63	63	33,3	45	11,7
48	64	66	66	33,3	45	11,7
50	66,1	68,1	70	33,8	47,5	13,7
53	70,6	72,6	73	33,8	47,5	13,7
55	70,6	72,6	75	33,8	47,5	13,7
60	80	82	80	38,8	52,5	13,7
63	82,1	84,1	83	38,8	52,5	13,7
65	85	87	85	38,8	52,5	13,7
70	90	92	92	44,4	60	15,6
75	96,8	98,8	97	44,4	60	15,6
80	104	106	105	44,4	60	16,3
85	108,0	110,0	110,0	43,7	60,0	16,3
90	111,0	113,0	115,0	48,7	65,0	16,3
95	119,0	121,0	120,0	48,7	65,0	16,3
100	124,0	126,0	125,0	48,7	65,0	16,3

### Advantages

- Rotating unit already preassembled
- Independent of the direction of rotation
- No seizing of O-rings
- Wide area of applications
- Low costs
- Use with various stationary parts possible
- No scoring of shafts and shaft sleeves
- Optimal damping of shock and vibration movements



# Elastomer bellows seals Type 175B

# Elastomer bellows seals Type 175B

## Technical specifications

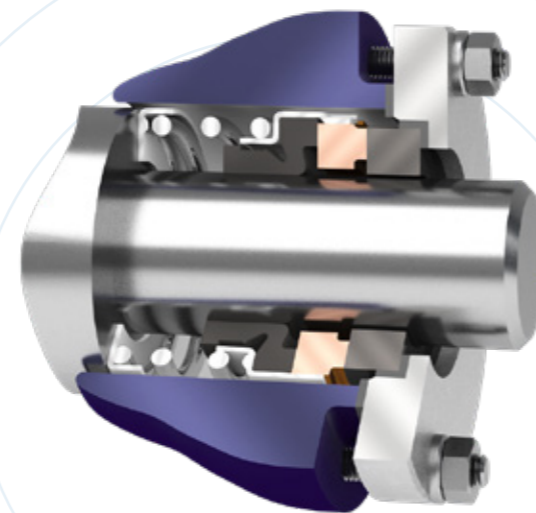
### Area of application\*

Pressure: up to 10 bar  
 Temperature: depending on elastomer  
 Sliding speed: up to 15 m/s

\* The maximum specifications for temperature, pressure and sliding speed apply in each case to independent higher operating conditions. However, this does not mean that the seal will function with all extreme conditions at the same time. If in doubt contact DEPAC.

### Dimensions

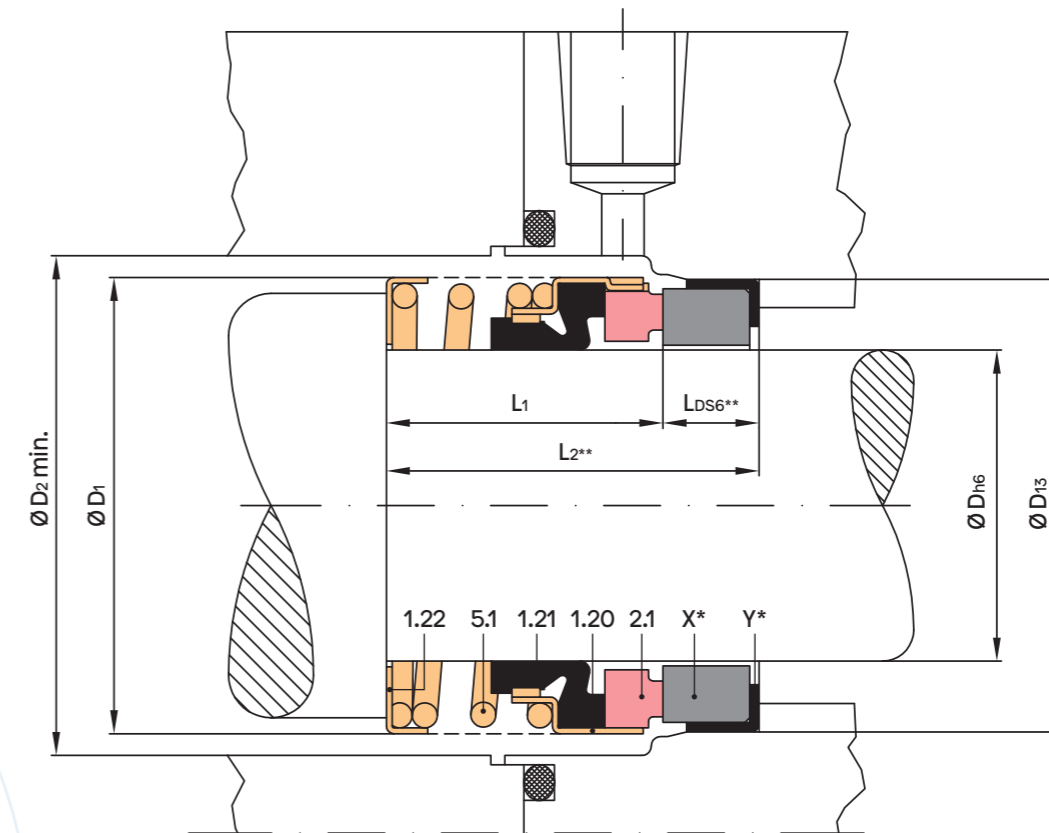
Shaft diameter: 10 – 100 mm  
 Imperial and special sizes on request



### Bill of materials

Item	Description	Material
1.21	Bellows	FKM, NBR, EPDM
1.20, 1.22	Angle ring	1.4301
2.1	Dynamic seal face	CA, SC, SSIC
5.1	Spring	1.4310
X*	Stationary part DS6	SC, SSIC, TC, CE
Y*	Profile seal	FKM, EPDM, PTFE

\* Not included in the scope of delivery!



### Dimension table Ø 10 – 100 mm

Dh6	D1	D2 min.	D13	L1	L2	LDS6
10	21,8	23,8	24,6	25,4	34,4	9
12	23,5	25,5	27,8	25,4	34,4	9
14	27	29	30,95	25,4	35,9	10,5
16	27	29	30,95	25,4	35,9	10,5
18	30,7	32,7	34,15	25,4	35,9	10,5
20	33,4	35,4	35,7	25,4	35,9	10,5
22	33,4	35,4	37,3	25,4	35,9	10,5
24	39,2	41,2	40,5	25,4	35,9	10,5
25	39,2	41,2	40,5	25,4	35,9	10,5
28	45,6	47,6	47,65	33,3	45,3	12
30	47,4	49,4	50,8	33,3	45,3	12
32	47,4	49,4	50,8	33,3	45,3	12
33	52	54	54	33,3	45,3	12
35	52	54	54	33,3	45,3	12
38	55,6	57,6	57,15	33,3	45,3	12
40	59,2	61,2	60,35	33,3	45,3	12
43	65,1	67,1	63,5	40,5	52,5	12

Dh6	D1	D2 min.	D13	L1	L2	LDS6
45	65,1	67,1	63,5	40,5	52,5	12
48	66,7	68,7	66,7	40,5	52,5	12
50	71	73	69,85	40,5	54	13,5
53	73,3	75,3	73,05	40,5	54	13,5
55	78,6	80,6	76,2	40,5	54	13,5
60	82,1	84,1	79,4	40,5	54	13,5
63	84,6	86,6	82,55	40,5	54	13,5
65	88,6	90,6	92,1	49,2	65,2	16
70	90	92	95,25	49,2	65,2	16
75	102,7	104,7	101,6	52,4	68,4	16
80	104	106	114,3	55,6	75,6	20
80	104,0	106,0	114,30	55,6	75,6	20,0
85	108,0	110,0	117,48	55,6	75,6	20,0
90	112,0	114,0	123,83	55,6	75,6	20,0
95	119,0	121,0	127,00	58,7	78,7	20,0
100	124,0	126,0	133,35	61,9	81,9	20,0

## Elastomer bellows seals Type 175C



DEPAC offers a complete range of mechanical seals with a short bellows design at a very competitive price especially for OEMs. The various versions are designed for applications in the most diverse installation spaces. All DEPAC mechanical seal variants can be supplied with various DEPAC stationary parts. The stationary parts that should be favoured in terms of design are illustrated in the sectional drawings and taken into account in the installation lengths. Other stationary parts change the installation length. Use this inexpensive alternative mechanical seal, especially if you need large quantities.

### Advantages

- Rotating unit already preassembled
- Independent of the direction of rotation
- No seizing of O-rings
- Wide area of applications
- Low costs
- Use with various stationary parts possible
- No scoring of shafts and shaft sleeves
- Optimal damping of shock and vibration movements

## Elastomer bellows seals Type 175C

### Technical specifications

#### Area of application\*

Pressure:	up to 10 bar
Temperature:	depending on elastomer
Sliding speed:	up to 15 m/s

\* The maximum specifications for temperature, pressure and sliding speed apply in each case to independent higher operating conditions. However, this does not mean that the seal will function with all extreme conditions at the same time. In if doubt contact DEPAC.

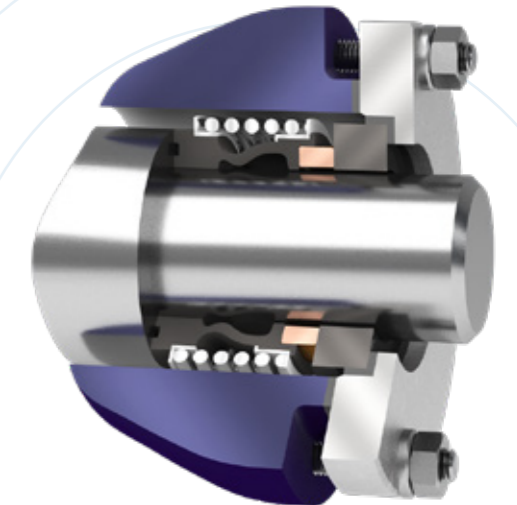
#### Dimensions

Shaft diameter:	10 – 100 mm
	Imperial and special sizes on request

#### Bill of materials

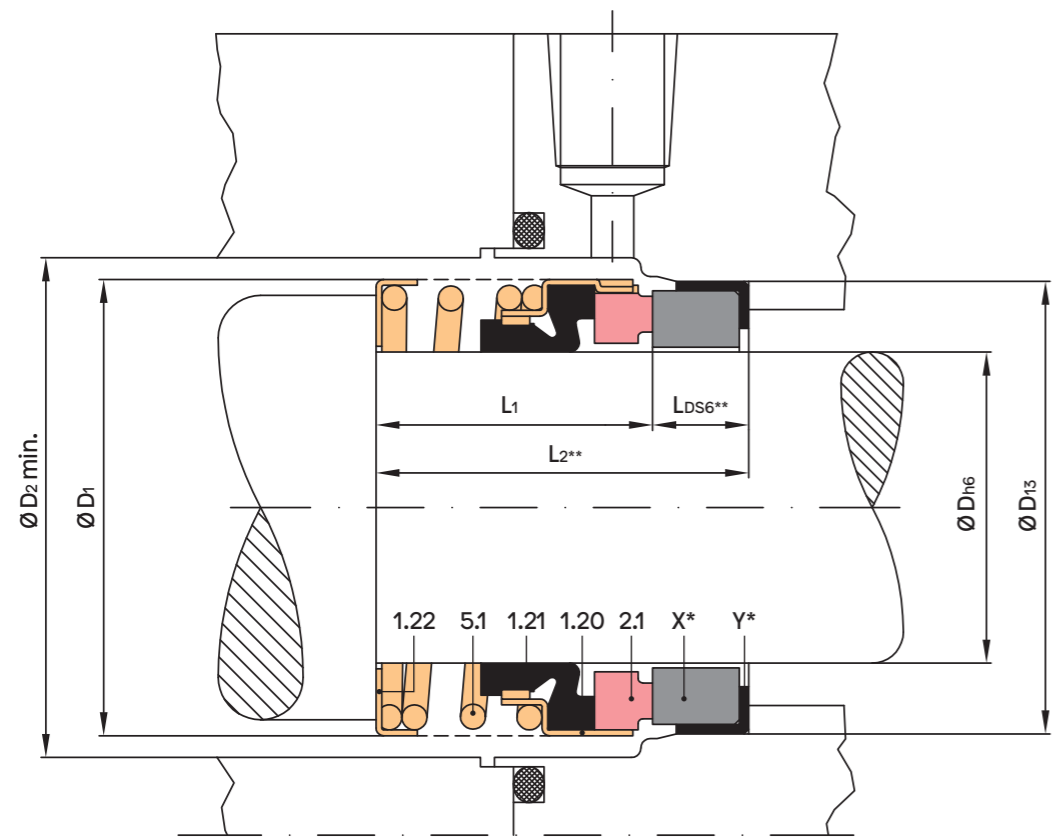
Item	Description	Material
1.21	Bellows	FKM, NBR, EPDM
1.20, 1.22	Angle ring	1.4301
2.1	Dynamic seal face	CA, SC, SSIC
5.1	Spring	1.4310
X*	Stationary part DS6	SC, SSIC, TC, CE
Y*	Profile seal	FKM, EPDM, PTFE

\* Not included in the scope of delivery!



# Elastomer bellows seals Type 175C

Notes



Dimension table Ø 10 – 100 mm

Dh6	D1	D2 min.	D13	L1	L2	LDS6
10	21,8	23,8	24,6	43,7	52,7	9
12	23,5	25,5	27,8	43,7	52,7	9
14	27	29	30,95	43,7	54,2	10,5
16	27	29	30,95	43,7	54,2	10,5
18	30,7	32,7	34,15	43,7	54,2	10,5
20	33,4	35,4	35,7	43,7	54,2	10,5
22	33,4	35,4	37,3	43,7	54,2	10,5
24	39,2	41,2	40,5	43,7	54,2	10,5
25	39,2	41,2	40,5	43,7	54,2	10,5
28	45,6	47,6	47,65	60,3	72,3	12
30	47,4	49,4	50,8	60,3	72,3	12
32	47,4	49,4	50,8	60,3	72,3	12
33	52	54	54	60,3	72,3	12
35	52	54	54	60,3	72,3	12
38	55,6	57,6	57,15	60,3	72,3	12
40	59,2	61,2	60,35	60,3	72,3	12
43	65,1	67,1	63,5	70,7	82,7	12

Dh6	D1	D2 min.	D13	L1	L2	LDS6
45	65,1	67,1	63,5	70,7	82,7	12
48	66,7	68,7	66,7	70,7	82,7	12
50	71	73	69,85	70,7	84,2	13,5
53	73,3	75,3	73,05	70,7	84,2	13,5
55	78,6	80,6	76,2	70,7	84,2	13,5
60	82,1	84,1	79,4	70,7	84,2	13,5
63	84,6	86,6	82,55	70,7	84,2	13,5
65	88,6	90,6	92,1	69,9	85,9	16
70	90	92	95,25	69,9	85,9	16
75	102,7	104,7	101,6	73	89	16
80	104	106	114,3	79,4	99,4	20
80	104,0	106,0	114,30	79,4	99,4	20,0
85	108,0	110,0	117,48	79,4	99,4	20,0
90	112,0	114,0	123,83	79,4	99,4	20,0
95	119,0	121,0	127,00	82,6	102,6	20,0
100	124,0	126,0	133,35	85,7	105,7	20,0





Mechanical seals  
Packings  
Hydraulic seals  
Workshop  
Comtec

DEPAC Anstalt  
Wirtschaftspark 44, FL-9492 Eschen  
T +423 373 9700, F +423 373 9719  
office@depac-fl.com, www.depac.at

Your authorized DEPAC dealer:

E200836